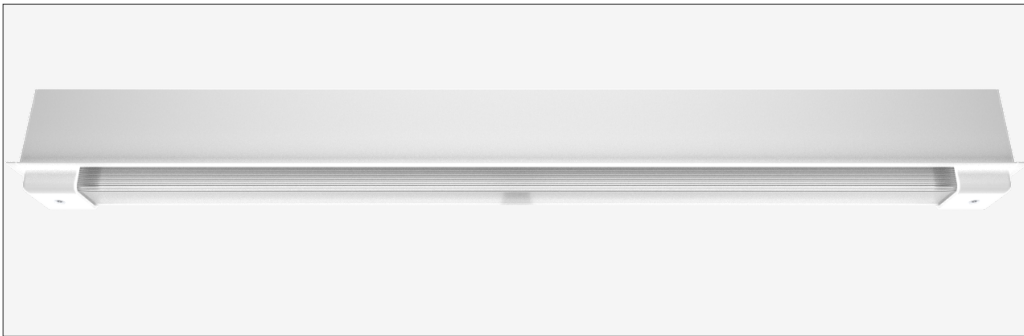


50 classic **semi-recessed** - SVR050CLA-SRE1200-FXD865060-WHT



- IK17** 175 joules impact resistance
- IP66** hermetically sealed light module cassette
- AT06** security torx tamper-proof fasteners

country of origin
Australia

- range** 50 classic semi-recessed
- product code** SVR050CLA-SRE1200-FXD865060-WHT

accreditations
Australian Made and Owned
EESS
RCM

description

Heavy-gauge extruded aluminium mounting base with durable polyester powder coat finish and impact-resistant GRP security caps

Impact-resistant UV-stabilised high-transmission polycarbonate light module diffuser

Serviceable replaceable and upgradable light module cassette

Internal socket drive security-torx 304 stainless steel security fasteners

Integral energy efficient Zhaga compliant Tridonic LED modules and power supply unit

Direct-fix or recessed butterfly bracket

Internal stainless steel wire safety lanyards

1.0 m circular flex connection

warranty
7-year standard
10-year on application

applications

extremely robust semi-recessed mount luminaire that enhances safety and security in the most challenging environments. a durable construction ensures dependable operation and superior performance under harsh operating conditions; ideal for applications such as transportation, custodial, public areas, and secure healthcare

standards
AS/NZS 60598.1:2017
AS/NZS 60598.2.1:2014
AS/NZS 60598.2.2:2016
AS 60529-2004
IEC/EN 62262:2002+A1:2021
ANSI/IES LM-79-19
ANSI/IES LM-80-21
ANSI/IES TM-21-21

polar curve



50 classic **semi-recessed** - SVR050CLA-SRE1200-FXD865060-WHT



driver

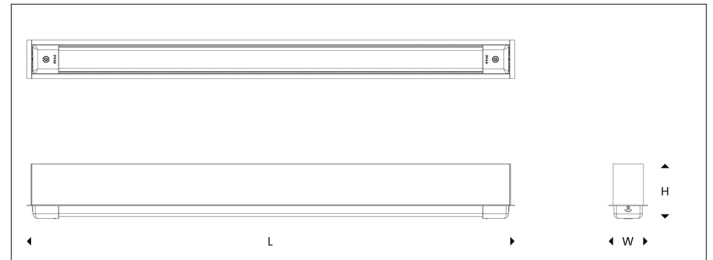
manufacturer	Tridonic
control interface	fixed output
dimming range	-
switch-on time	< 700 ms
switch-off time	< 50 ms
rated lifetime	> 100,000 h

light source

manufacturer	Tridonic
technology	linear LED module
operating mode	constant current
delivered lumens	3330 lm
colour rendering index	80
correlated colour temperature	6500 K
colour tolerance	3 SDCM
CTI	≥ 600 V
lumen maintenance [L80F10]	> 72,000 h

electrical

rated supply voltage	220 – 240 V
mains frequency	0 / 50 / 60 Hz
power consumption	29.97 W
leakage current	< 350 µA
in-rush current	22.4 A / 176 µs
power factor [0.98
THD	6%
overvoltage protection	320 V AC / 48 h
mains surge protection [L-N]	1 kV
mains surge protection [L/N-PE]	2 kV



dimensions [mm]

L - length	1270
W - width	96
H - height	138
cut-out	1255 x 81

mounting

type	semi-recessed
method	direct-fix or butterfly bracket
orientation	horizontal or vertical burning position

mounting base + end caps

material	extruded aluminium base + GRP security end caps
finish	white texture polyester powder coat + white GRP

light module cassette

material	high-transmission + uv-stabilised extruded polycarbonate [hermetically sealed]
finish	clear reeded

maximum circuit breaker loads

conductor size	1.5mm ²		2.5mm ²		1.5mm ²		2.5mm ²	
circuit breaker type	C10	C13	C16	C20	B10	B13	B16	B20
luminaire quantity	21	28	36	45	13	17	22	27