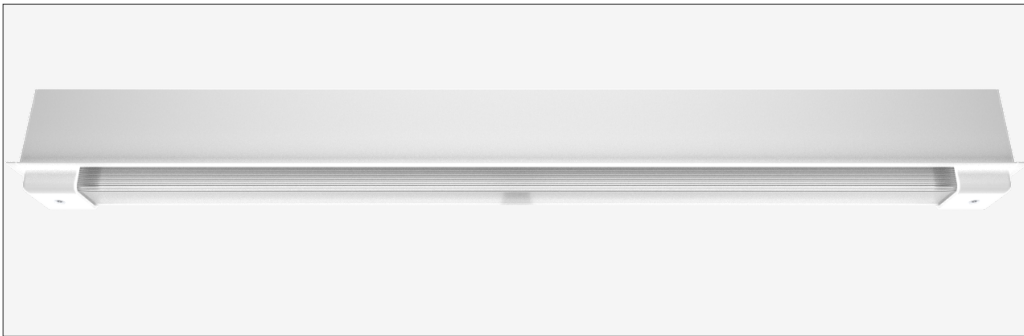


50 classic **semi-recessed** - SVR050CLA-SRE1500-FXD940020-WHT



- IK17** 175 joules impact resistance
- IP66** hermetically sealed light module cassette
- AT06** security torx tamper-proof fasteners

country of origin
Australia

- range** 50 classic semi-recessed
- product code** SVR050CLA-SRE1500-FXD940020-WHT

accreditations
Australian Made and Owned
EESS
RCM

description

Heavy-gauge extruded aluminium mounting base with durable polyester powder coat finish and impact-resistant GRP security caps

Impact-resistant UV-stabilised high-transmission polycarbonate light module diffuser

Serviceable replaceable and upgradable light module cassette

Internal socket drive security-torx 304 stainless steel security fasteners

Integral energy efficient Zhaga compliant Tridonic LED modules and power supply unit

Direct-fix or recessed butterfly bracket

Internal stainless steel wire safety lanyards

1.0 m circular flex connection

warranty
7-year standard
10-year on application

applications

extremely robust semi-recessed mount luminaire that enhances safety and security in the most challenging environments. a durable construction ensures dependable operation and superior performance under harsh operating conditions; ideal for applications such as transportation, custodial, public areas, and secure healthcare

standards
AS/NZS 60598.1:2017
AS/NZS 60598.2.1:2014
AS/NZS 60598.2.2:2016
AS 60529-2004
IEC/EN 62262:2002+A1:2021
ANSI/IES LM-79-19
ANSI/IES LM-80-21
ANSI/IES TM-21-21

polar curve





driver

| | |
|-------------------|--------------|
| manufacturer | Tridonic |
| control interface | fixed output |
| dimming range | - |
| switch-on time | < 600 ms |
| switch-off time | < 20 ms |
| rated lifetime | > 100,000 h |



light source

| | |
|-------------------------------|-------------------|
| manufacturer | Tridonic |
| technology | linear LED module |
| operating mode | constant current |
| delivered lumens | 1186 lm |
| colour rendering index | 90 |
| correlated colour temperature | 4000 K |
| colour tolerance | 3 SDCM |
| CTI | ≥ 600 V |
| lumen maintenance [L80F10] | > 72,000 h |

dimensions [mm]

| | |
|------------|-----------|
| L - length | 1550 |
| W - width | 96 |
| H - height | 138 |
| cut-out | 1535 x 81 |

mounting

| | |
|-------------|---|
| type | semi-recessed |
| method | direct-fix or butterfly bracket |
| orientation | horizontal or vertical burning position |

electrical

| | |
|---------------------------------|-----------------|
| rated supply voltage | 220 – 240 V |
| mains frequency | 0 / 50 / 60 Hz |
| power consumption | 12.49 W |
| leakage current | < 230 µA |
| in-rush current | 23.0 A / 174 µs |
| power factor [| 0.98 |
| THD | 6% |
| overvoltage protection | 320 V AC / 48 h |
| mains surge protection [L-N] | 1 kV |
| mains surge protection [L/N-PE] | 2 kV |

mounting base + end caps

| | |
|----------|---|
| material | extruded aluminium base + GRP security end caps |
| finish | white texture polyester powder coat + white GRP |

light module cassette

| | |
|----------|--|
| material | high-transmission + uv-stabilised extruded polycarbonate [hermetically sealed] |
| finish | clear reeded |

maximum circuit breaker loads

| | | | | | | | | |
|----------------------|--------------------|-----|--------------------|-----|--------------------|-----|--------------------|-----|
| conductor size | 1.5mm ² | | 2.5mm ² | | 1.5mm ² | | 2.5mm ² | |
| circuit breaker type | C10 | C13 | C16 | C20 | B10 | B13 | B16 | B20 |
| luminaire quantity | 21 | 28 | 35 | 45 | 13 | 17 | 21 | 27 |