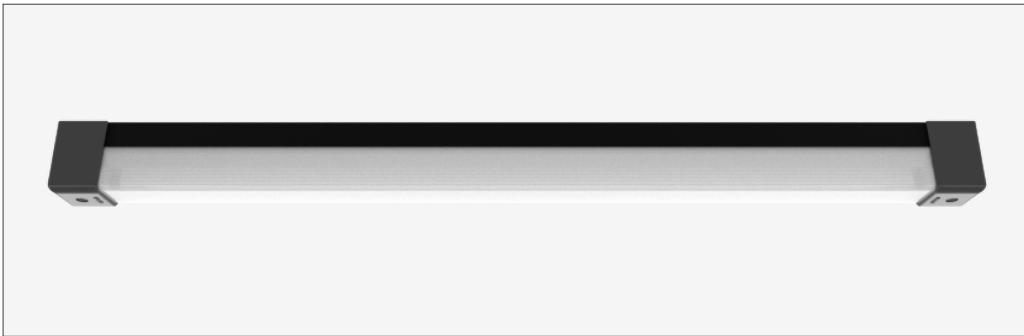


50 eco **surface** - SVR050ECO-SUR1800-DA2840060-BLK



<b>IK15</b>	125 joules impact resistance
<b>IP66</b>	hermetically sealed light module cassette
<b>AT06</b>	security torx tamper-proof fasteners

**country of origin**  
Australia

<b>range</b>	50 eco surface
<b>product code</b>	SVR050ECO-SUR1800-DA2840060-BLK
<b>description</b>	<p>Extruded aluminium mounting base with durable polyester powder coat finish and impact-resistant GRP security caps</p> <p>Impact-resistant UV-stabilised high-transmission polycarbonate light module diffuser</p> <p>Serviceable replaceable and upgradable light module cassette</p> <p>Internal socket drive security-torx 304 stainless steel security fasteners</p> <p>Integral energy efficient Zhaga compliant Tridonic LED modules and power supply unit</p> <p>Direct-fix surface mounted</p> <p>Internal stainless steel wire safety lanyards</p> <p>1.0 m circular flex connection</p>

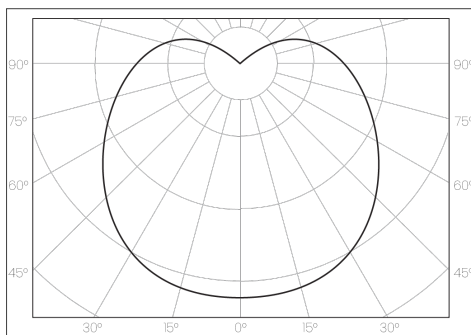
**accreditations**  
Australian Made and Owned  
DALI Alliance  
EESS  
RCM

**warranty**  
7-year standard  
10-year on application

<b>applications</b>	highly robust surface mounted luminaire that enhances safety and security in challenging environments. a durable construction ensures dependable operation and superior performance under harsh operating conditions; ideal for applications such as transportation, custodial, public areas, and secure healthcare
---------------------	---

**standards**  
AS/NZS 60598.1:2017  
AS/NZS 60598.2.1:2014  
AS 60529-2004  
IEC/EN 62262:2002+A1:2021  
ANSI/IES LM-79-19  
ANSI/IES LM-80-21  
ANSI/IES TM-21-21

**polar curve**



50 eco **surface** - SVR050ECO-SUR1800-DA2840060-BLK



**driver**

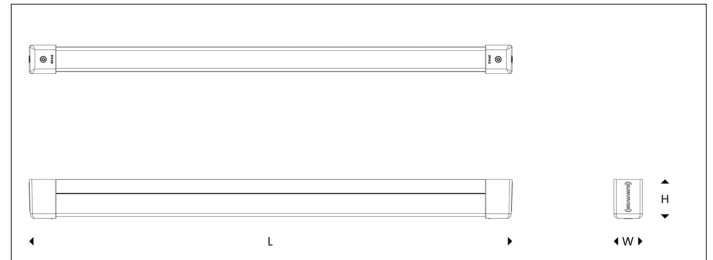
manufacturer	Tridonic
control interface	DALI-2
dimming range	1 – 100 %
switch-on time	< 600 ms
switch-off time	< 20 ms
rated lifetime	> 100,000 h

**light source**

manufacturer	Tridonic
technology	linear LED module
operating mode	constant current
delivered lumens	5341 lm
colour rendering index	80
correlated colour temperature	4000 K
colour tolerance	3 SDCM
CTI	≥ 600 V
lumen maintenance [L80F10]	> 72,000 h

**electrical**

rated supply voltage	220 – 240 V
mains frequency	0 / 50 / 60 Hz
power consumption	44.96 W
leakage current	< 230 µA
in-rush current	23.0 A / 174 µs
power factor [	0.98
THD	6%
overvoltage protection	320 V AC / 48 h
mains surge protection [L-N]	1 kV
mains surge protection [L/N-PE]	2 kV



**dimensions [mm]**

L - length	1810
W - width	72
H - height	99

**mounting**

type	surface mounted
method	direct-fix or wall bracket
orientation	horizontal or vertical burning position

**mounting base + end caps**

material	extruded aluminium base + GRP security end caps
finish	black texture polyester powder coat + black GRP

**light module cassette**

material	high-transmission + uv-stabilised extruded polycarbonate [hermetically sealed]
finish	translucent reeded

**maximum circuit breaker loads**

conductor size	1.5mm <sup>2</sup>		2.5mm <sup>2</sup>		1.5mm <sup>2</sup>		2.5mm <sup>2</sup>	
circuit breaker type	C10	C13	C16	C20	B10	B13	B16	B20
luminaire quantity	21	28	35	45	13	17	21	27