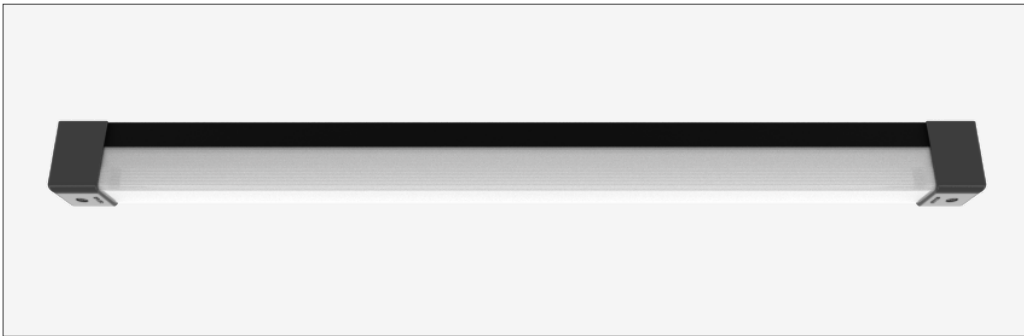


50 eco **surface** - SVR050ECO-SUR2600-FXD940080-BLK



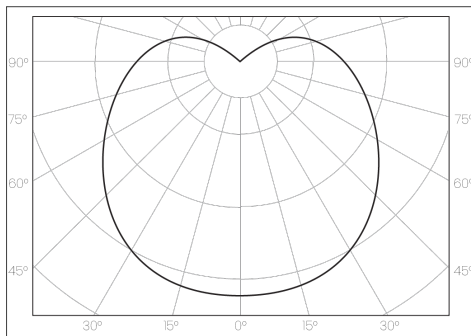
- IK15** 125 joules impact resistance
- IP66** hermetically sealed light module cassette
- AT06** security torx tamper-proof fasteners

range 50 eco surface
product code SVR050ECO-SUR2600-FXD940080-BLK

description Extruded aluminium mounting base with durable polyester powder coat finish and impact-resistant GRP security caps
Impact-resistant UV-stabilised high-transmission polycarbonate light module diffuser
Serviceable replaceable and upgradable light module cassette
Internal socket drive security-torx 304 stainless steel security fasteners
Integral energy efficient Zhaga compliant Tridonic LED modules and power supply unit
Direct-fix surface mounted
Internal stainless steel wire safety lanyards
1.0 m circular flex connection

applications highly robust surface mounted luminaire that enhances safety and security in challenging environments. a durable construction ensures dependable operation and superior performance under harsh operating conditions; ideal for applications such as transportation, custodial, public areas, and secure healthcare

polar curve



country of origin
Australia

accreditations
Australian Made and Owned
EESS
RCM

warranty
7-year standard
10-year on application

standards
AS/NZS 60598.1:2017
AS/NZS 60598.2.1:2014
AS 60529-2004
IEC/EN 62262:2002+A1:2021
ANSI/IES LM-79-19
ANSI/IES LM-80-21
ANSI/IES TM-21-21



driver

manufacturer	Tridonic
control interface	fixed output
dimming range	-
switch-on time	< 700 ms
switch-off time	< 50 ms
rated lifetime	> 100,000 h

light source

manufacturer	Tridonic
technology	linear LED module
operating mode	constant current
delivered lumens	9060 lm
colour rendering index	90
correlated colour temperature	4000 K
colour tolerance	3 SDCM
CTI	≥ 600 V
lumen maintenance [L80F10]	> 72,000 h

electrical

rated supply voltage	220 – 240 V
mains frequency	0 / 50 / 60 Hz
power consumption	89.92 W
leakage current	< 350 µA
in-rush current	23.0 A / 174 µs
power factor [0.98
THD	6%
overvoltage protection	320 V AC / 48 h
mains surge protection [L-N]	1 kV
mains surge protection [L/N-PE]	2 kV



dimensions [mm]

L - length	2650
W - width	72
H - height	99

mounting

type	surface mounted
method	direct-fix or wall bracket
orientation	horizontal or vertical burning position

mounting base + end caps

material	extruded aluminium base + GRP security end caps
finish	black texture polyester powder coat + black GRP

light module cassette

material	high-transmission + uv-stabilised extruded polycarbonate [hermetically sealed]
finish	translucent reeded

maximum circuit breaker loads

conductor size	1.5mm ²		2.5mm ²		1.5mm ²		2.5mm ²	
	C10	C13	C16	C20	B10	B13	B16	B20
circuit breaker type	C10	C13	C16	C20	B10	B13	B16	B20
luminaire quantity	10	14	17	22	6	8	10	13