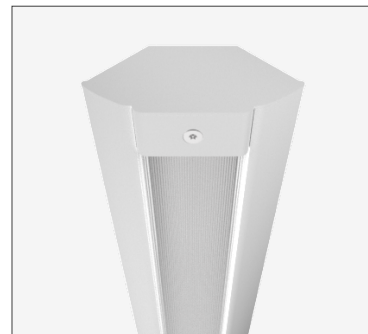
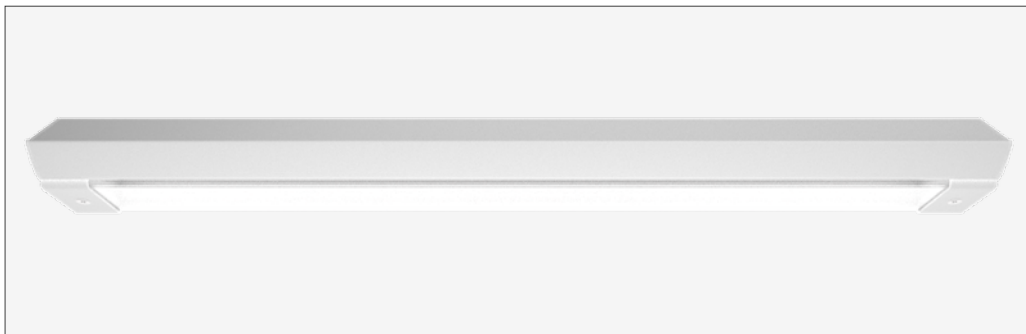


100 classic **cornice** - SVR100CLA-COR0500-FXD927060-WHT



- IK17** 175 joules impact resistance
- IP66** hermetically sealed light module cassette
- AT06** security torx tamper-proof fasteners

country of origin
Australia

range 100 classic cornice

product code SVR100CLA-COR0500-FXD927060-WHT

accreditations
Australian Made and Owned
EESS
RCM

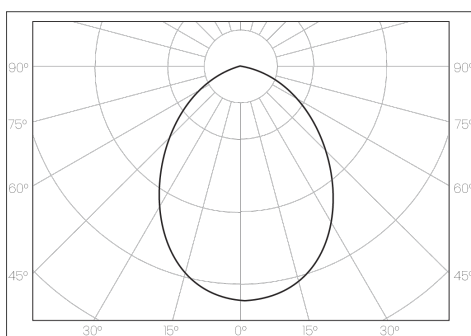
description Heavy-gauge extruded aluminium mounting base and security caps with durable polyester powder coat finish
Impact-resistant UV-stabilised high-transmission polycarbonate light module diffuser
Serviceable replaceable and upgradable light module cassette
Internal socket drive security-torx 304 stainless steel security fasteners
Integral energy efficient Zhaga compliant Tridonic LED modules and power supply unit
Direct-fix surface mounted
Internal stainless steel wire safety lanyards
1.0 m circular flex connection

warranty
7-year standard
10-year on application

applications extremely robust surface mounted luminaire that enhances safety and security in the most challenging environments. a durable construction ensures dependable operation and superior performance under harsh operating conditions; ideal for applications such as transportation, custodial, public areas, and secure healthcare

standards
AS/NZS 60598.1:2017
AS/NZS 60598.2.1:2014
AS 60529-2004
IEC/EN 62262:2002+A1:2021
ANSI/IES LM-79-19
ANSI/IES LM-80-21
ANSI/IES TM-21-21

polar curve



100 classic **cornice** - SVR100CLA-COR0500-FXD927060-WHT



driver

| | |
|-------------------|--------------|
| manufacturer | Tridonic |
| control interface | fixed output |
| dimming range | - |
| switch-on time | < 700 ms |
| switch-off time | < 30 ms |
| rated lifetime | > 100,000 h |

light source

| | |
|-------------------------------|-------------------|
| manufacturer | Tridonic |
| technology | linear LED module |
| operating mode | constant current |
| delivered lumens | 338 lm |
| colour rendering index | 90 |
| correlated colour temperature | 2700 K |
| colour tolerance | 3 SDCM |
| CTI | ≥ 600 V |
| lumen maintenance [L80F10] | > 72,000 h |

electrical

| | |
|---------------------------------|-----------------|
| rated supply voltage | 220 – 240 V |
| mains frequency | 0 / 50 / 60 Hz |
| power consumption | 5 W |
| leakage current | < 700 µA |
| in-rush current | 13.6 A / 304 µs |
| power factor [| 0.86 |
| THD | 19% |
| overvoltage protection | 320 V AC / 48 h |
| mains surge protection [L-N] | 1 kV |
| mains surge protection [L/N-PE] | 2 kV |



dimensions [mm]

| | |
|------------|-----|
| L - length | 460 |
| W - width | 210 |
| H - height | 100 |

mounting

| | |
|-------------|---|
| type | surface mounted |
| method | direct-fix or wall bracket |
| orientation | horizontal or vertical burning position |

mounting base + end caps

| | |
|----------|---|
| material | extruded aluminium base + security end caps |
| finish | white texture polyester powder coat |

light module cassette

| | |
|----------|--|
| material | high-transmission + uv-stabilised extruded polycarbonate [hermetically sealed] |
| finish | clear reeded |

maximum circuit breaker loads

| conductor size | 1.5mm ² | | 2.5mm ² | | 1.5mm ² | | 2.5mm ² | |
|----------------------|--------------------|-----|--------------------|-----|--------------------|-----|--------------------|-----|
| circuit breaker type | C10 | C13 | C16 | C20 | B10 | B13 | B16 | B20 |
| luminaire quantity | 30 | 38 | 46 | 58 | 18 | 23 | 28 | 35 |