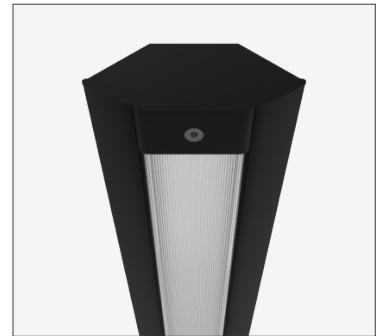


100 classic cornice - SVR100CLA-COR1500-FXD850100-BLK



- IK17** 175 joules impact resistance
- IP66** hermetically sealed light module cassette
- AT06** security torx tamper-proof fasteners

**country of origin**  
Australia

**range** 100 classic cornice  
**product code** SVR100CLA-COR1500-FXD850100-BLK

**accreditations**  
Australian Made and Owned  
EESS  
RCM

**description** Heavy-gauge extruded aluminium mounting base and security caps with durable polyester powder coat finish  
Impact-resistant UV-stabilised high-transmission polycarbonate light module diffuser  
Serviceable replaceable and upgradable light module cassette  
Internal socket drive security-torx 304 stainless steel security fasteners  
Integral energy efficient Zhaga compliant Tridonic LED modules and power supply unit  
Direct-fix surface mounted  
Internal stainless steel wire safety lanyards  
1.0 m circular flex connection

**warranty**  
7-year standard  
10-year on application

**applications** extremely robust surface mounted luminaire that enhances safety and security in the most challenging environments. a durable construction ensures dependable operation and superior performance under harsh operating conditions; ideal for applications such as transportation, custodial, public areas, and secure healthcare

**standards**  
AS/NZS 60598.1:2017  
AS/NZS 60598.2.1:2014  
AS 60529-2004  
IEC/EN 62262:2002+A1:2021  
ANSI/IES LM-79-19  
ANSI/IES LM-80-21  
ANSI/IES TM-21-21

**polar curve**



100 classic cornice - SVR100CLA-COR1500-FXD850100-BLK



**driver**

|                   |              |
|-------------------|--------------|
| manufacturer      | Tridonic     |
| control interface | fixed output |
| dimming range     | -            |
| switch-on time    | < 600 ms     |
| switch-off time   | < 20 ms      |
| rated lifetime    | > 100,000 h  |



**light source**

|                               |                   |
|-------------------------------|-------------------|
| manufacturer                  | Tridonic          |
| technology                    | linear LED module |
| operating mode                | constant current  |
| delivered lumens              | 5327 lm           |
| colour rendering index        | 80                |
| correlated colour temperature | 5000 K            |
| colour tolerance              | 3 SDCM            |
| CTI                           | ≥ 600 V           |
| lumen maintenance [L80F10]    | > 72,000 h        |

**dimensions [mm]**

|            |      |
|------------|------|
| L - length | 1530 |
| W - width  | 210  |
| H - height | 100  |

**mounting**

|             |   |
|-------------|---|
| type        | surface mounted                         |
| method      | direct-fix or wall bracket              |
| orientation | horizontal or vertical burning position |

**mounting base + end caps**

|          |   |
|----------|---|
| material | extruded aluminium base + security end caps |
| finish   | black texture polyester powder coat         |

**light module cassette**

|          |  |
|----------|--|
| material | high-transmission + uv-stabilised extruded polycarbonate [hermetically sealed] |
| finish   | clear reeded   |

**electrical**

|                                 |                 |
|---------------------------------|-----------------|
| rated supply voltage            | 220 – 240 V     |
| mains frequency                 | 0 / 50 / 60 Hz  |
| power consumption               | 62.44 W         |
| leakage current                 | < 230 µA        |
| in-rush current                 | 23.0 A / 174 µs |
| power factor [                  | 0.98            |
| THD                             | 6%              |
| overvoltage protection          | 320 V AC / 48 h |
| mains surge protection [L-N]    | 1 kV            |
| mains surge protection [L/N-PE] | 2 kV            |

**maximum circuit breaker loads**

| conductor size       | 1.5mm <sup>2</sup> |     | 2.5mm <sup>2</sup> |     | 1.5mm <sup>2</sup> |     | 2.5mm <sup>2</sup> |     |
|----------------------|--------------------|-----|--------------------|-----|--------------------|-----|--------------------|-----|
|                      | C10                | C13 | C16                | C20 | B10                | B13 | B16                | B20 |
| circuit breaker type | C10                | C13 | C16                | C20 | B10                | B13 | B16                | B20 |
| luminaire quantity   | 21                 | 28  | 35                 | 45  | 13                 | 17  | 21                 | 27  |