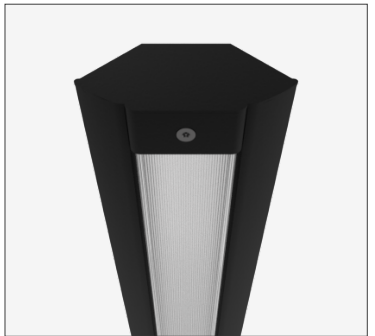
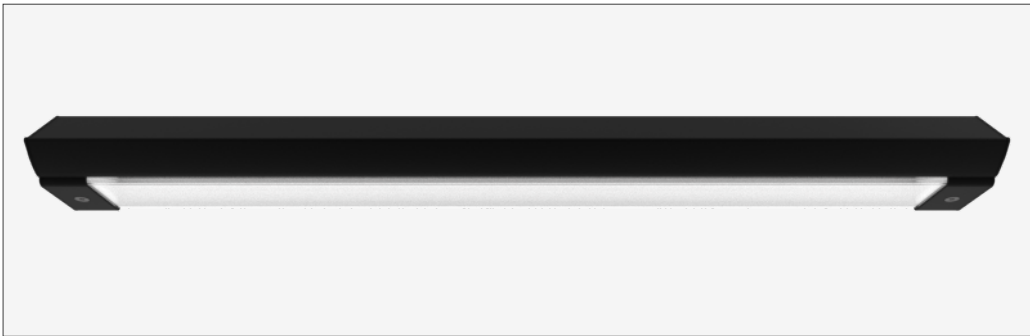


100 classic **cornice** - SVR100CLA-COR2100-DA2930060-BLK



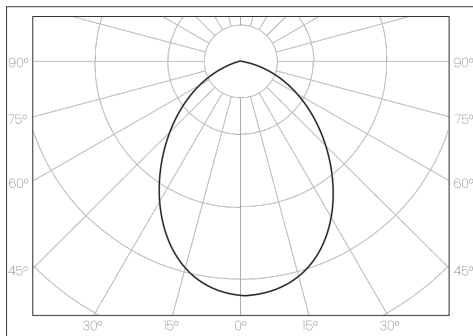
- IK17** 175 joules impact resistance
- IP66** hermetically sealed light module cassette
- AT06** security torx tamper-proof fasteners

- range** 100 classic cornice
- product code** SVR100CLA-COR2100-DA2930060-BLK

- description** Heavy-gauge extruded aluminium mounting base and security caps with durable polyester powder coat finish
- Impact-resistant UV-stabilised high-transmission polycarbonate light module diffuser
- Serviceable replaceable and upgradable light module cassette
- Internal socket drive security-torx 304 stainless steel security fasteners
- Integral energy efficient Zhaga compliant Tridonic LED modules and power supply unit
- Direct-fix surface mounted
- Internal stainless steel wire safety lanyards
- 1.0 m circular flex connection

- applications** extremely robust surface mounted luminaire that enhances safety and security in the most challenging environments. a durable construction ensures dependable operation and superior performance under harsh operating conditions; ideal for applications such as transportation, custodial, public areas, and secure healthcare

polar curve



- country of origin**
- Australia

- accreditations**
- Australian Made and Owned
- DALI Alliance
- EESS
- RCM

- warranty**
- 7-year standard
- 10-year on application

- standards**
- AS/NZS 60598.1:2017
- AS/NZS 60598.2.1:2014
- AS 60529-2004
- IEC/EN 62262:2002+A1:2021
- ANSI/IES LM-79-19
- ANSI/IES LM-80-21
- ANSI/IES TM-21-21

100 classic **cornice** - SVR100CLA-COR2100-DA2930060-BLK



driver

manufacturer	Tridonic
control interface	DALI-2
dimming range	1 – 100 %
switch-on time	< 700 ms
switch-off time	< 50 ms
rated lifetime	> 100,000 h

light source

manufacturer	Tridonic
technology	linear LED module
operating mode	constant current
delivered lumens	3686 lm
colour rendering index	90
correlated colour temperature	3000 K
colour tolerance	3 SDCM
CTI	≥ 600 V
lumen maintenance [L80F10]	> 72,000 h

electrical

rated supply voltage	220 – 240 V
mains frequency	0 / 50 / 60 Hz
power consumption	52.45 W
leakage current	< 350 µA
in-rush current	22.4 A / 176 µs
power factor [0.97
THD	8%
overvoltage protection	320 V AC / 48 h
mains surge protection [L-N]	1 kV
mains surge protection [L/N-PE]	2 kV



dimensions [mm]

L - length	2090
W - width	210
H - height	100

mounting

type	surface mounted
method	direct-fix or wall bracket
orientation	horizontal or vertical burning position

mounting base + end caps

material	extruded aluminium base + security end caps
finish	black texture polyester powder coat

light module cassette

material	high-transmission + uv-stabilised extruded polycarbonate [hermetically sealed]
finish	clear reeded

maximum circuit breaker loads

conductor size	1.5mm ²		2.5mm ²		1.5mm ²		2.5mm ²	
circuit breaker type	C10	C13	C16	C20	B10	B13	B16	B20
luminaire quantity	10	14	18	22	6	8	11	13