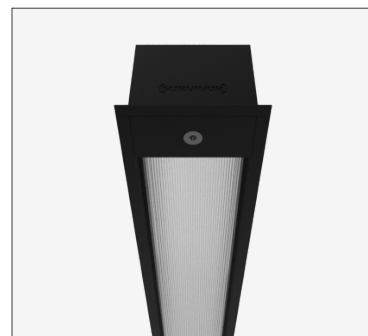
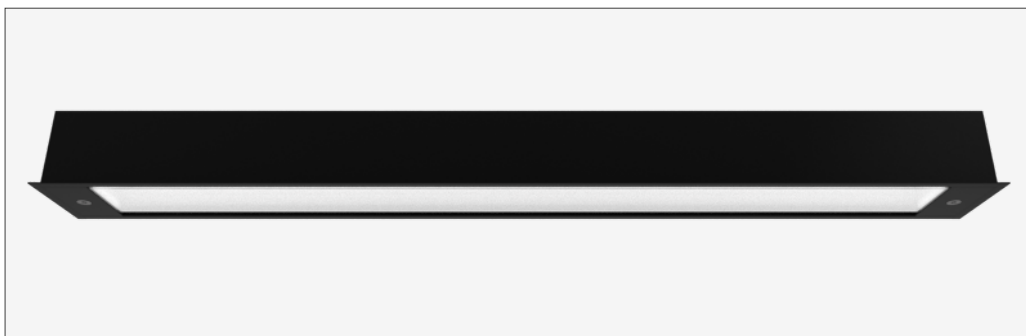


100 classic **recessed** - SVR100CLA-REC2100-DA2935080-BLK



| | |
|-------------|---|
| IK17 | 175 joules impact resistance |
| IP66 | hermetically sealed light module cassette |
| AT06 | security torx tamper-proof fasteners |

country of origin
Australia

| | |
|---------------------|---------------------------------|
| range | 100 classic recessed |
| product code | SVR100CLA-REC2100-DA2935080-BLK |

| | |
|--------------------|--|
| description | <p>Heavy-gauge extruded aluminium mounting base and security caps with durable polyester powder coat finish</p> <p>Impact-resistant UV-stabilised high-transmission polycarbonate light module diffuser</p> <p>Serviceable replaceable and upgradable light module cassette</p> <p>Internal socket drive security-torx 304 stainless steel security fasteners</p> <p>Integral energy efficient Zhaga compliant Tridonic LED modules and power supply unit</p> <p>Direct-fix or recessed butterfly bracket</p> <p>Internal stainless steel wire safety lanyards</p> <p>1.0 m circular flex connection</p> |
|--------------------|--|

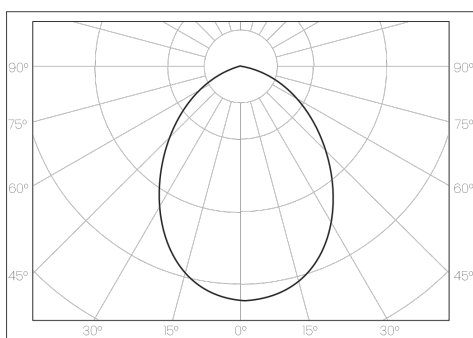
accreditations
Australian Made and Owned
DALI Alliance
EESS
RCM

warranty
7-year standard
10-year on application

| | |
|---------------------|--|
| applications | extremely robust recessed luminaire that enhances safety and security in the most challenging environments. a durable construction ensures dependable operation and superior performance under harsh operating conditions; ideal for applications such as transportation, custodial, public areas, and secure healthcare |
|---------------------|--|

standards
AS/NZS 60598.1:2017
AS/NZS 60598.2.1:2014
AS/NZS 60598.2.2:2016
AS 60529-2004
IEC/EN 62262:2002+A1:2021
ANSI/IES LM-79-19
ANSI/IES LM-80-21
ANSI/IES TM-21-21

polar curve



100 classic **recessed** - SVR100CLA-REC2100-DA2935080-BLK



driver

| | |
|-------------------|-------------|
| manufacturer | Tridonic |
| control interface | DALI-2 |
| dimming range | 1 – 100 % |
| switch-on time | < 700 ms |
| switch-off time | < 50 ms |
| rated lifetime | > 100,000 h |

light source

| | |
|-------------------------------|-------------------|
| manufacturer | Tridonic |
| technology | linear LED module |
| operating mode | constant current |
| delivered lumens | 3383 lm |
| colour rendering index | 90 |
| correlated colour temperature | 3500 K |
| colour tolerance | 3 SDCM |
| CTI | ≥ 600 V |
| lumen maintenance [L80F10] | > 72,000 h |

electrical

| | |
|---------------------------------|-----------------|
| rated supply voltage | 220 – 240 V |
| mains frequency | 0 / 50 / 60 Hz |
| power consumption | 46.64 W |
| leakage current | < 350 µA |
| in-rush current | 22.4 A / 176 µs |
| power factor [| 0.97 |
| THD | 8% |
| overvoltage protection | 320 V AC / 48 h |
| mains surge protection [L-N] | 1 kV |
| mains surge protection [L/N-PE] | 2 kV |



dimensions [mm]

| | |
|------------|----------------|
| L - length | 2110 |
| W - width | 138 |
| H - height | 102 |
| cut-out - | 2095 L x 123 W |

mounting

| | |
|-------------|---|
| type | recessed |
| method | direct-fix or butterfly bracket |
| orientation | horizontal or vertical burning position |

mounting base + end caps

| | |
|----------|---|
| material | extruded aluminium base + security end caps |
| finish | black texture polyester powder coat |

light module cassette

| | |
|----------|--|
| material | high-transmission + uv-stabilised extruded polycarbonate [hermetically sealed] |
| finish | clear reeded |

maximum circuit breaker loads

| conductor size | 1.5mm ² | | 2.5mm ² | | 1.5mm ² | | 2.5mm ² | |
|----------------------|--------------------|-----|--------------------|-----|--------------------|-----|--------------------|-----|
| circuit breaker type | C10 | C13 | C16 | C20 | B10 | B13 | B16 | B20 |
| luminaire quantity | 10 | 14 | 18 | 22 | 6 | 8 | 11 | 13 |