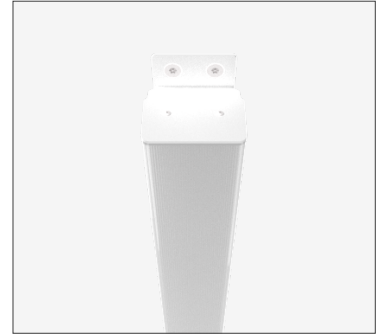
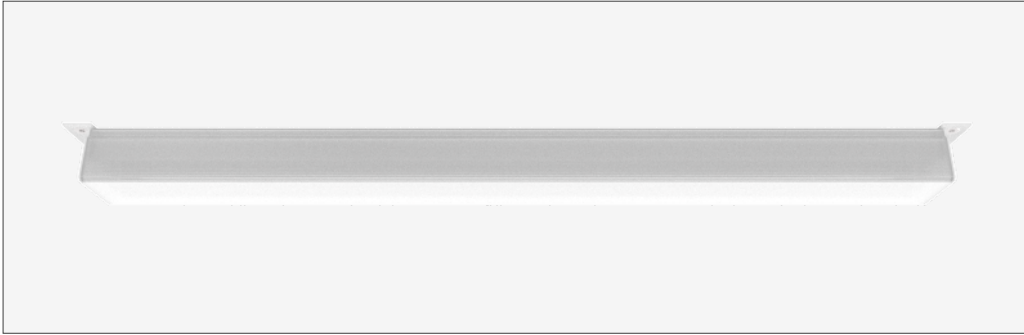


100 eco **naked** - SVR100ECO-NKD1800-DA2865100-WHT



- IK15** 125 joules impact resistance
- IP66** hermetically sealed light module cassette
- AT06** security torx tamper-proof fasteners

**country of origin**  
Australia

**range** 100 eco naked  
**product code** SVR100ECO-NKD1800-DA2865100-WHT

**accreditations**  
Australian Made and Owned  
DALI Alliance  
EESS  
RCM

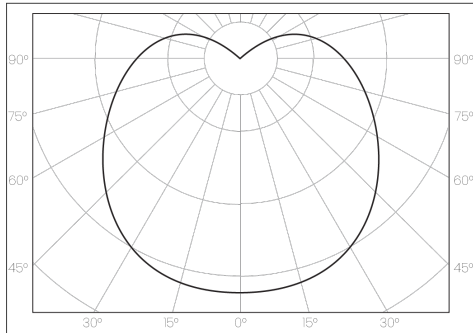
**description** Aluminium mounting bracket with durable polyester powder coat finish  
Impact-resistant UV-stabilised high-transmission polycarbonate light module diffuser  
Serviceable replaceable and upgradable light module cassette  
Internal socket drive security-torx 304 stainless steel security fasteners  
Integral energy efficient Zhaga compliant Tridonic LED modules and power supply unit  
Direct-fix surface mounted  
1.0 m circular flex connection

**warranty**  
7-year standard  
10-year on application

**applications** highly robust surface mounted luminaire that enhances safety and security in challenging environments. a durable construction ensures dependable operation and superior performance under harsh operating conditions; ideal for applications such as transportation, custodial, public areas, and secure healthcare

**standards**  
AS/NZS 60598.1:2017  
AS/NZS 60598.2.1:2014  
AS 60529-2004  
IEC/EN 62262:2002+A1:2021  
ANSI/IES LM-79-19  
ANSI/IES LM-80-21  
ANSI/IES TM-21-21

**polar curve**





**driver**

manufacturer	Tridonic
control interface	DALI-2
dimming range	1 – 100 %
switch-on time	< 600 ms
switch-off time	< 20 ms
rated lifetime	> 100,000 h



**light source**

manufacturer	Tridonic
technology	linear LED module
operating mode	constant current
delivered lumens	9080 lm
colour rendering index	80
correlated colour temperature	6500 K
colour tolerance	3 SDCM
CTI	≥ 600 V
lumen maintenance [L80F10]	> 72,000 h

**dimensions [mm]**

L - length	1780
W - width	105
H - height	85

**electrical**

rated supply voltage	220 – 240 V
mains frequency	0 / 50 / 60 Hz
power consumption	74.93 W
leakage current	< 230 µA
in-rush current	23.0 A / 174 µs
power factor [	0.98
THD	6%
overvoltage protection	320 V AC / 48 h
mains surge protection [L-N]	1 kV
mains surge protection [L/N-PE]	2 kV

**mounting**

type	surface mounted
method	direct-fix or wall bracket
orientation	horizontal or vertical burning position

**mounting bracket**

material	aluminium security mounting bracket
finish	white texture polyester powder coat

**light module cassette**

material	high-transmission + uv-stabilised extruded polycarbonate [hermetically sealed]
finish	translucent needed

**maximum circuit breaker loads**

conductor size	1.5mm <sup>2</sup>		2.5mm <sup>2</sup>		1.5mm <sup>2</sup>		2.5mm <sup>2</sup>	
circuit breaker type	C10	C13	C16	C20	B10	B13	B16	B20
luminaire quantity	21	28	35	45	13	17	21	27