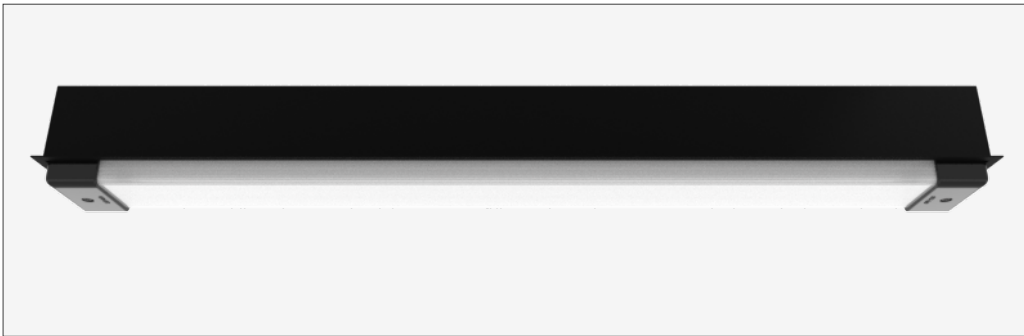


100 eco **semi-recessed** - SVR100ECO-SRE0500-FXD840100-BLK



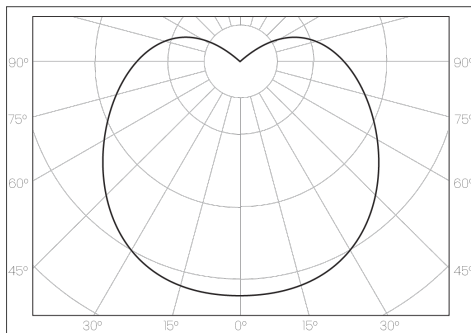
- IK15** 125 joules impact resistance
- IP66** hermetically sealed light module cassette
- AT06** security torx tamper-proof fasteners

- range** 100 eco semi-recessed
- product code** SVR100ECO-SRE0500-FXD840100-BLK

- description**
- Extruded aluminium mounting base with durable polyester powder coat finish and impact-resistant GRP security caps
 - Impact-resistant UV-stabilised high-transmission polycarbonate light module diffuser
 - Serviceable replaceable and upgradable light module cassette
 - Internal socket drive security-torx 304 stainless steel security fasteners
 - Integral energy efficient Zhaga compliant Tridonic LED modules and power supply unit
 - Direct-fix or recessed butterfly bracket
 - Internal stainless steel wire safety lanyards
 - 1.0 m circular flex connection

- applications** highly robust semi-recessed luminaire that enhances safety and security in challenging environments. a durable construction ensures dependable operation and superior performance under harsh operating conditions; ideal for applications such as transportation, custodial, public areas, and secure healthcare

polar curve



- country of origin**
Australia

- accreditations**
- Australian Made and Owned
 - EESS
 - RCM

- warranty**
- 7-year standard
 - 10-year on application

- standards**
- AS/NZS 60598.1:2017
 - AS/NZS 60598.2.1:2014
 - AS/NZS 60598.2.2:2016
 - AS 60529-2004
 - IEC/EN 62262:2002+A1:2021
 - ANSI/IES LM-79-19
 - ANSI/IES LM-80-21
 - ANSI/IES TM-21-21

100 eco **semi-recessed** - SVR100ECO-SRE0500-FXD840100-BLK



driver

manufacturer	Tridonic
control interface	fixed output
dimming range	-
switch-on time	< 700 ms
switch-off time	< 30 ms
rated lifetime	> 100,000 h

light source

manufacturer	Tridonic
technology	linear LED module
operating mode	constant current
delivered lumens	1526 lm
colour rendering index	80
correlated colour temperature	4000 K
colour tolerance	3 SDCM
CTI	≥ 600 V
lumen maintenance [L80F10]	> 72,000 h

electrical

rated supply voltage	220 – 240 V
mains frequency	0 / 50 / 60 Hz
power consumption	12.49 W
leakage current	< 700 µA
in-rush current	13.6 A / 304 µs
power factor [0.86
THD	19%
overvoltage protection	320 V AC / 48 h
mains surge protection [L-N]	1 kV
mains surge protection [L/N-PE]	2 kV



dimensions [mm]

L - length	480
W - width	138
H - height	138
cut-out -	465 L x 123 W

mounting

type	semi-recessed
method	direct-fix or butterfly bracket
orientation	horizontal or vertical burning position

mounting base + end caps

material	extruded aluminium base + GRP security end caps
finish	black texture polyester powder coat + black GRP

light module cassette

material	high-transmission + uv-stabilised extruded polycarbonate [hermetically sealed]
finish	translucent reeded

maximum circuit breaker loads

conductor size	1.5mm ²		2.5mm ²		1.5mm ²		2.5mm ²	
circuit breaker type	C10	C13	C16	C20	B10	B13	B16	B20
luminaire quantity	30	38	46	58	18	23	28	35