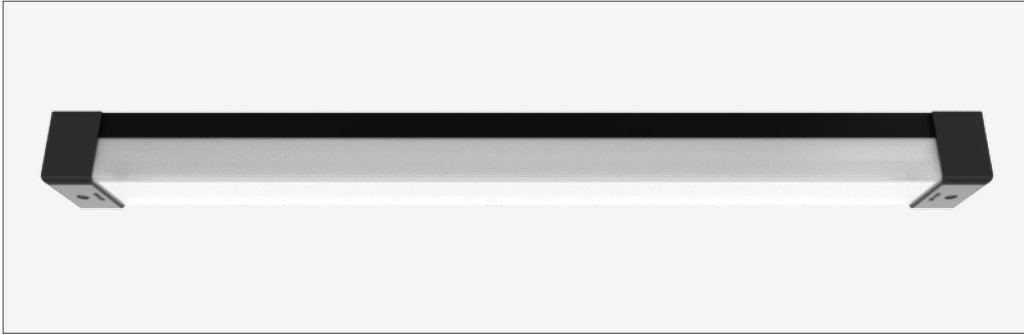


100 eco **surface** - SVR100ECO-SUR2600-FXD850100-BLK



- IK15** 125 joules impact resistance
- IP66** hermetically sealed light module cassette
- AT06** security torx tamper-proof fasteners

**country of origin**  
Australia

**range** 100 eco surface  
**product code** SVR100ECO-SUR2600-FXD850100-BLK

**accreditations**  
Australian Made and Owned  
EESS  
RCM

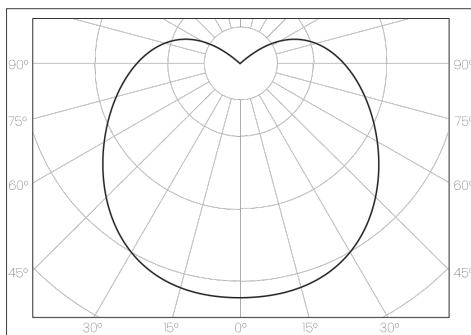
**description** Extruded aluminium mounting base with durable polyester powder coat finish and impact-resistant GRP security caps  
Impact-resistant UV-stabilised high-transmission polycarbonate light module diffuser  
Serviceable replaceable and upgradable light module cassette  
Internal socket drive security-torx 304 stainless steel security fasteners  
Integral energy efficient Zhaga compliant Tridonic LED modules and power supply unit  
Direct-fix surface mounted  
Internal stainless steel wire safety lanyards  
1.0 m circular flex connection

**warranty**  
7-year standard  
10-year on application

**applications** highly robust surface mounted luminaire that enhances safety and security in challenging environments. a durable construction ensures dependable operation and superior performance under harsh operating conditions; ideal for applications such as transportation, custodial, public areas, and secure healthcare

**standards**  
AS/NZS 60598.1:2017  
AS/NZS 60598.2.1:2014  
AS 60529-2004  
IEC/EN 62262:2002+A1:2021  
ANSI/IES LM-79-19  
ANSI/IES LM-80-21  
ANSI/IES TM-21-21

**polar curve**





**driver**

|                   |              |
|-------------------|--------------|
| manufacturer      | Tridonic     |
| control interface | fixed output |
| dimming range     | -            |
| switch-on time    | < 700 ms     |
| switch-off time   | < 50 ms      |
| rated lifetime    | > 100,000 h  |



**light source**

|                               |                   |
|-------------------------------|-------------------|
| manufacturer                  | Tridonic          |
| technology                    | linear LED module |
| operating mode                | constant current  |
| delivered lumens              | 13537 lm          |
| colour rendering index        | 80                |
| correlated colour temperature | 5000 K            |
| colour tolerance              | 3 SDCM            |
| CTI                           | ≥ 600 V           |
| lumen maintenance [L80F10]    | > 72,000 h        |

**dimensions [mm]**

|            |      |
|------------|------|
| L - length | 2650 |
| W - width  | 112  |
| H - height | 99   |

**electrical**

|                                 |                 |
|---------------------------------|-----------------|
| rated supply voltage            | 220 - 240 V     |
| mains frequency                 | 0 / 50 / 60 Hz  |
| power consumption               | 112.4 W         |
| leakage current                 | < 350 µA        |
| in-rush current                 | 23.0 A / 174 µs |
| power factor [                  | 0.98            |
| THD                             | 6%              |
| overvoltage protection          | 320 V AC / 48 h |
| mains surge protection [L-N]    | 1 kV            |
| mains surge protection [L/N-PE] | 2 kV            |

**mounting**

|             |   |
|-------------|---|
| type        | surface mounted                         |
| method      | direct-fix or wall bracket              |
| orientation | horizontal or vertical burning position |

**mounting base + end caps**

|          |   |
|----------|---|
| material | extruded aluminium base + GRP security end caps |
| finish   | black texture polyester powder coat + black GRP |

**light module cassette**

|          |  |
|----------|--|
| material | high-transmission + uv-stabilised extruded polycarbonate [hermetically sealed] |
| finish   | translucent reeded   |

**maximum circuit breaker loads**

| conductor size       | 1.5mm <sup>2</sup> |     | 2.5mm <sup>2</sup> |     | 1.5mm <sup>2</sup> |     | 2.5mm <sup>2</sup> |     |
|----------------------|--------------------|-----|--------------------|-----|--------------------|-----|--------------------|-----|
| circuit breaker type | C10                | C13 | C16                | C20 | B10                | B13 | B16                | B20 |
| luminaire quantity   | 10                 | 14  | 17                 | 22  | 6                  | 8   | 10                 | 13  |